

Innovations 2008





EVoline® FlipTop

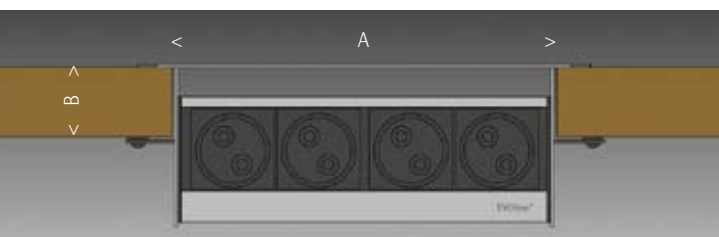
Timeless design made of solid stainless steel. International modules for electricity, data and multimedia, able to be freely combined.

Cable outlet alternatively as brush to combat dust or as rubber lip to repel dampness (with the FlipTop Cuisine).

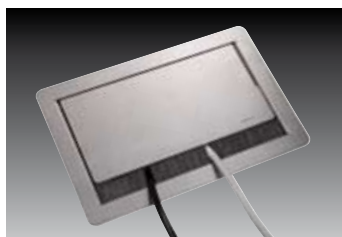
Open and close with multiple latching. Data cable plugs in without kinks. Can be retrofitted at any time.

Installed flush with the work top. Special dimensions on request.

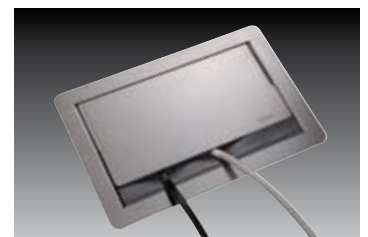
The elegant alternative for office, kitchen and hotel.



FlipTop installation dimensions:
A = L 235 mm x W 150 mm
B = max. 40 mm



FlipTop Data with brush



FlipTop Cuisine with rubber lip

EVoline® FlipTop



EVoline® FlipTop DATA

Three power sockets Germany, Austria
Fixed mains connection cable 3 m
Two modular adapters CAT6 for patch
cable RJ45 to RJ45, switched 1:1
Housing and cap made from brushed
stainless steel, brush strip in black
for work tops up to 40 mm thick



EVoline® FlipTop CUISINE

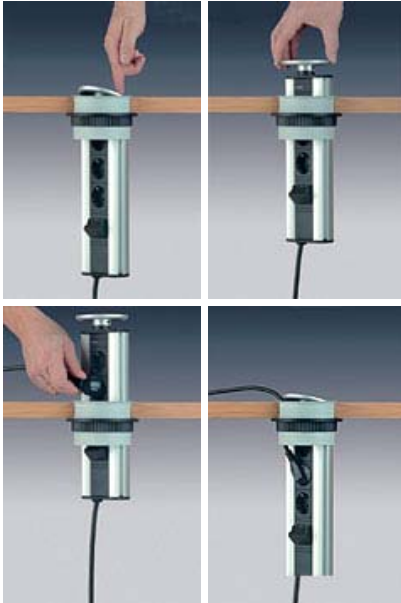
Four power sockets Germany, Austria
Fixed mains connection cable 2.5 m
Plug enclosed loose
Housing and cap made from brushed
stainless steel, rubber lip in black
for work tops up to 40 mm thick



Available power socket modules see table of
countries on page 152 in the main catalogue



EVOLine® Port The Principle



The Principle

Retractable aluminium housing with connections for power and data.
Easy to install.

The Function

Press the rocking cover on the hollow, pull out at the opening, connect the cable, and retract it.
The rocking cover will release the path for the connected cables.

Special features

For the highest level of design and function honoured with the 'reddot award' .
Internationally patented.

◀ back

repeat ▶



EVoline® Port Basic Models



EVoline® Port

Silver anodized aluminium profile: 2 VDE sockets*, 3.0 m supply cable with plug: for work surfaces of maximum thickness 50 mm, mounting hole ø 102 mm

Rocking cover and collar made of plastic, lacquered in silver **

Rocking cover and collar made of plastic, black ***

Rocking cover made of solid stainless steel, CD appearance and plastic collar lacquered to match ***

Rocking cover made of solid stainless steel, CD appearance and plastic collar lacquered to match, NIGHTLIGHT effect with 2 blue LEDs under the rocking cover: illuminated ON/OFF switch ***

931.00.033

931.00.052

931.00.311

931.00.312



* Sockets with contact protection

** Goods in stock, deliverable at short notice

*** Deliverable on inquiry, please ascertain delivery time



EVoline® Port

Silver anodized aluminium profile: 3 VDE sockets*: 3.0 m supply cable with plug: for work surfaces of maximum thickness of 50 mm, mounting hole ø 102 mm

Rocking cover and collar made of plastic lacquered in silver **

Rocking cover and collar made of plastic, black ***

Rocking cover made of solid stainless steel, CD appearance and plastic collar lacquered to match ***

Rocking cover made of solid stainless steel, CD appearance and plastic collar lacquered to match: NIGHTLIGHT effect with 2 blue LEDs under the rocking cover: illuminated ON/OFF switch ***

931.00.001

931.00.050

931.00.216

931.00.313



* Sockets with contact protection

** Goods in stock, deliverable at short notice

*** Deliverable on inquiry, please ascertain delivery time



EVOLine® Port Basic Models



EVOLine® Port DATA

Silver anodized aluminium profile: 2 VDE sockets*: 3.0 m supply cable with plug:
2 modular couplings RJ 45:RJ45 Cat.5 for connecting patch cables 1:1, screened:
for work surfaces maximum thickness 50 mm, mounting hole ø 102 mm

Rocking cover and collar made of plastic lacquered in silver **	Rocking cover and collar made of plastic, black ***	Rocking cover made of solid stainless steel, CD appearance and plastic collar lacquered to match ***	Rocking cover made of solid stainless steel, CD appearance and plastic collar lacquered to match: NIGHTLIGHT effect with 2 blue LEDs under the rocking cover: illuminated ON/OFF switch ***
---	---	--	---

931.00.314

931.00.315

931.00.316

931.00.317



- * Sockets with contact protection
- ** Goods in stock, deliverable at short notice
- *** Deliverable on inquiry, please ascertain delivery time



EVOLine® Port

Silver anodized aluminium profile: 3 VDE sockets*: 3.0 m supply cable with plug:
2 modular couplings RJ 45:RJ45 Cat.5 for connecting patch cables 1:1, screened,
for work surfaces maximum thickness 50 mm, mounting hole ø 102 mm

Rocking cover and collar made of plastic lacquered in silver **	Rocking cover and collar made of plastic, black ***	Rocking cover made of solid stainless steel, CD appearance and plastic collar, lacquered to match ***	Rocking cover made of solid stainless steel, CD appearance and plastic collar lacquered to match: NIGHTLIGHT effect with 2 blue LEDs under the rocking cover: illuminated ON/OFF switch ***
---	---	---	---

931.00.318

931.00.319

931.00.320

931.00.321



- * Sockets with contact protection
- ** Goods in stock, deliverable at short notice
- *** Deliverable on inquiry, please ascertain delivery time

